




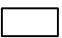





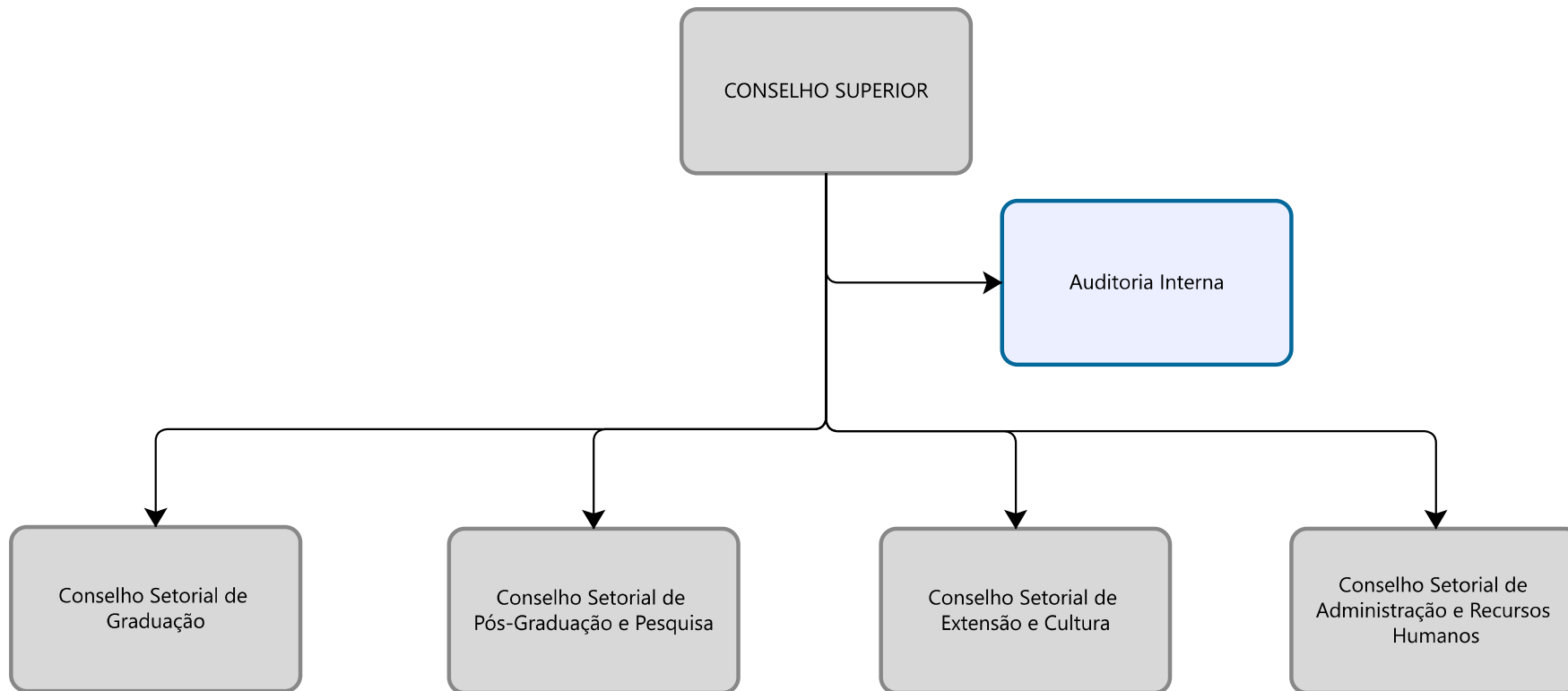
**Universidade Federal de Juiz de Fora**

# ORGANOGRAMA UFJF

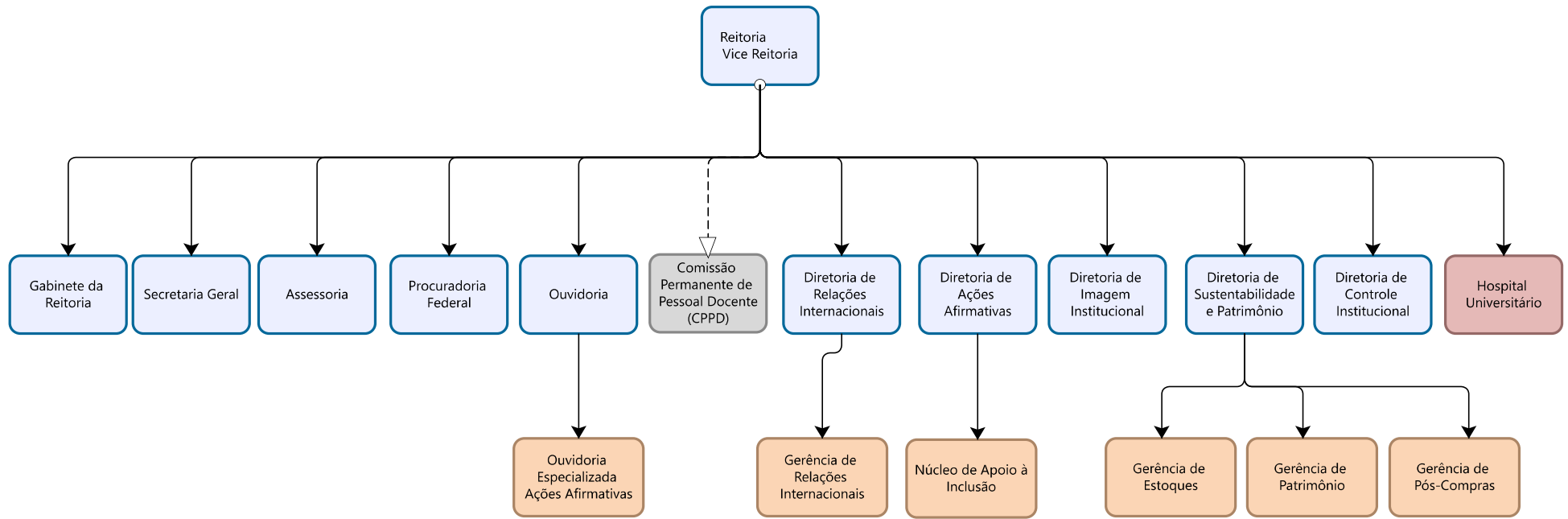
## LEGENDA:

- |   |   |  |   |
|---|---|--|---|
|  Órgãos Colegiados |  Administração Superior, Unidades Acadêmicas e Pró-Reitorias |  Órgãos Suplementares |   |
|  Coordenações      |  Gerências   |  Secretarias            |  Assessorias |

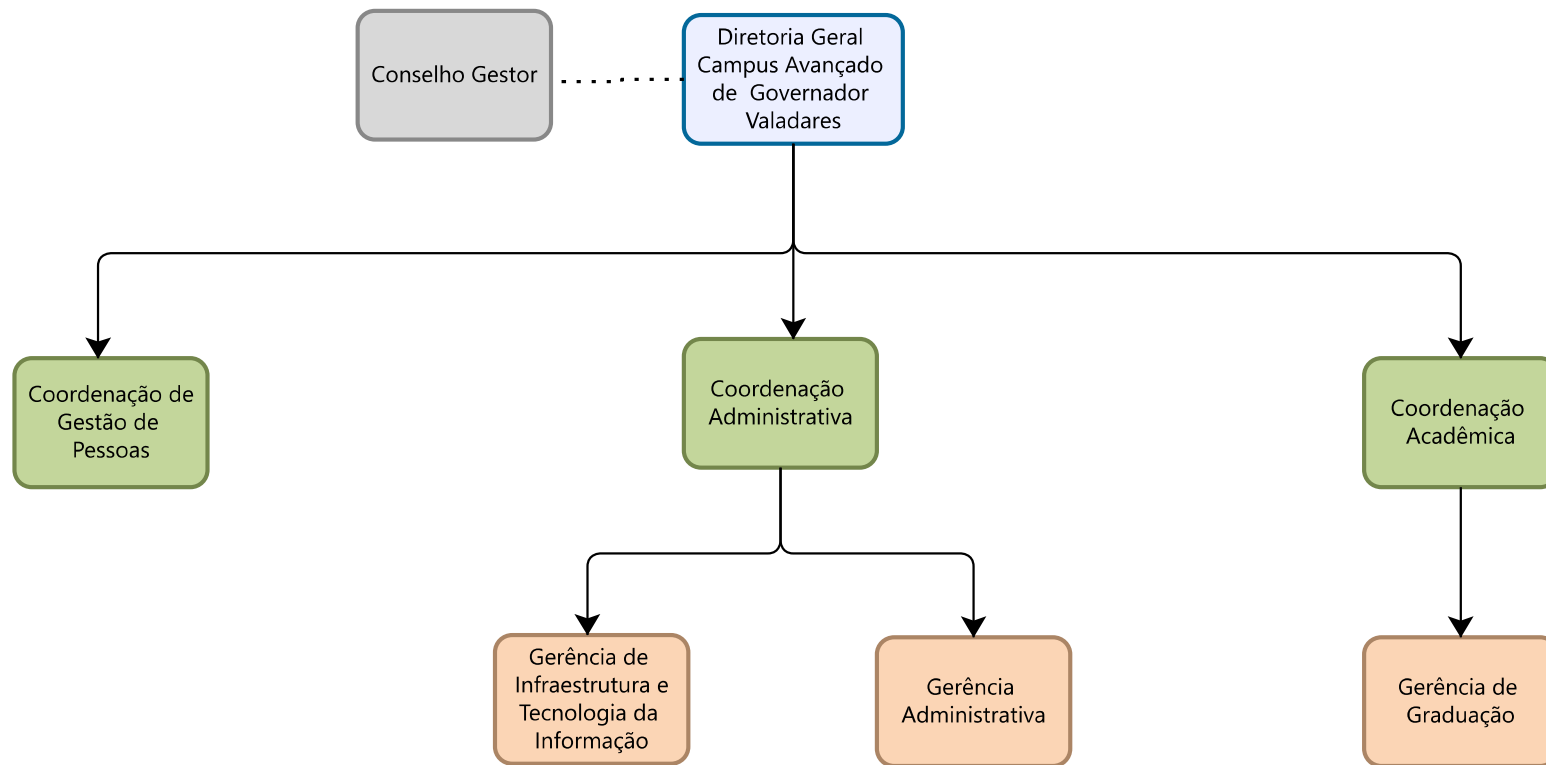
**ÓRGÃOS DE DELIBERAÇÃO SUPERIOR**



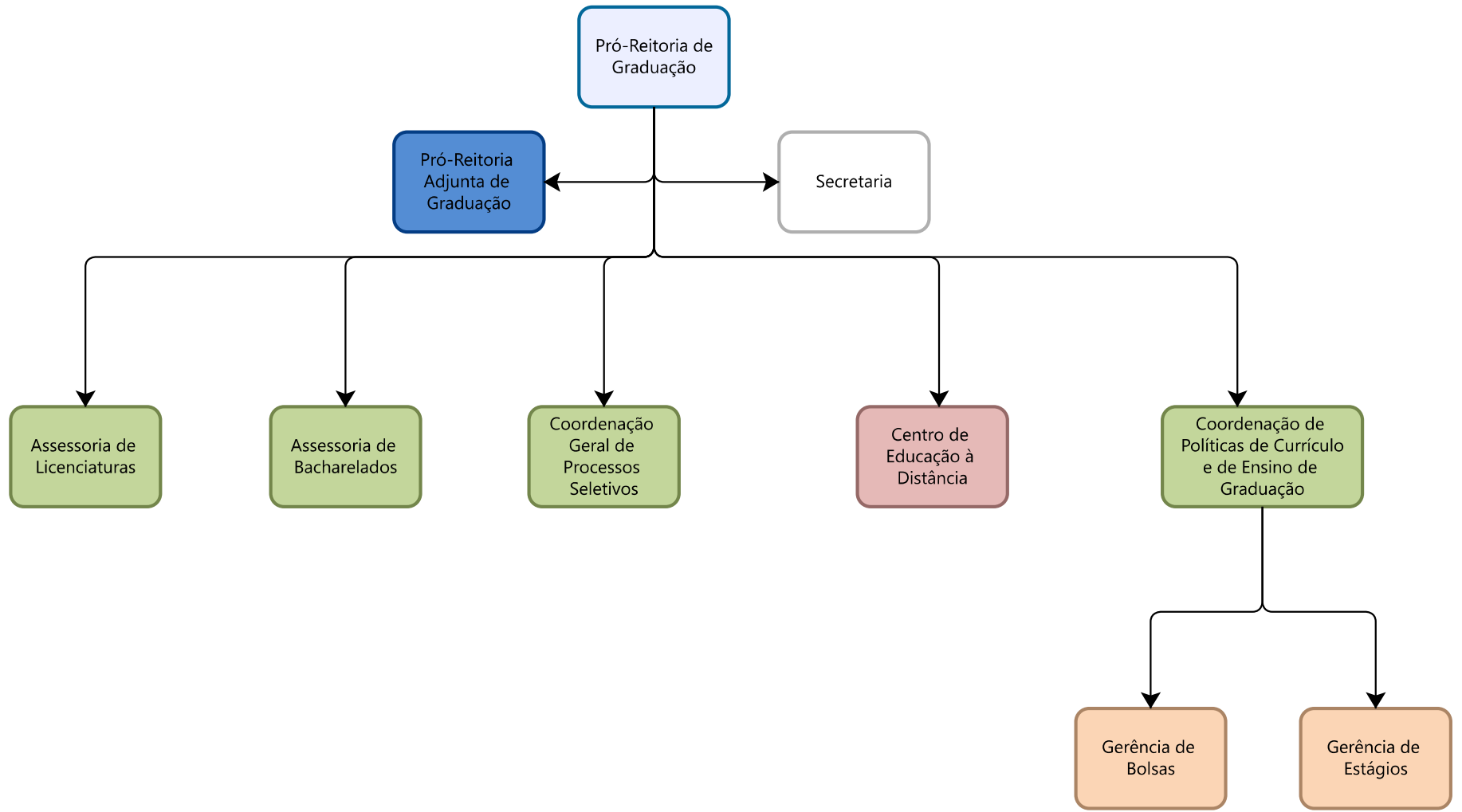
ADMINISTRAÇÃO SUPERIOR

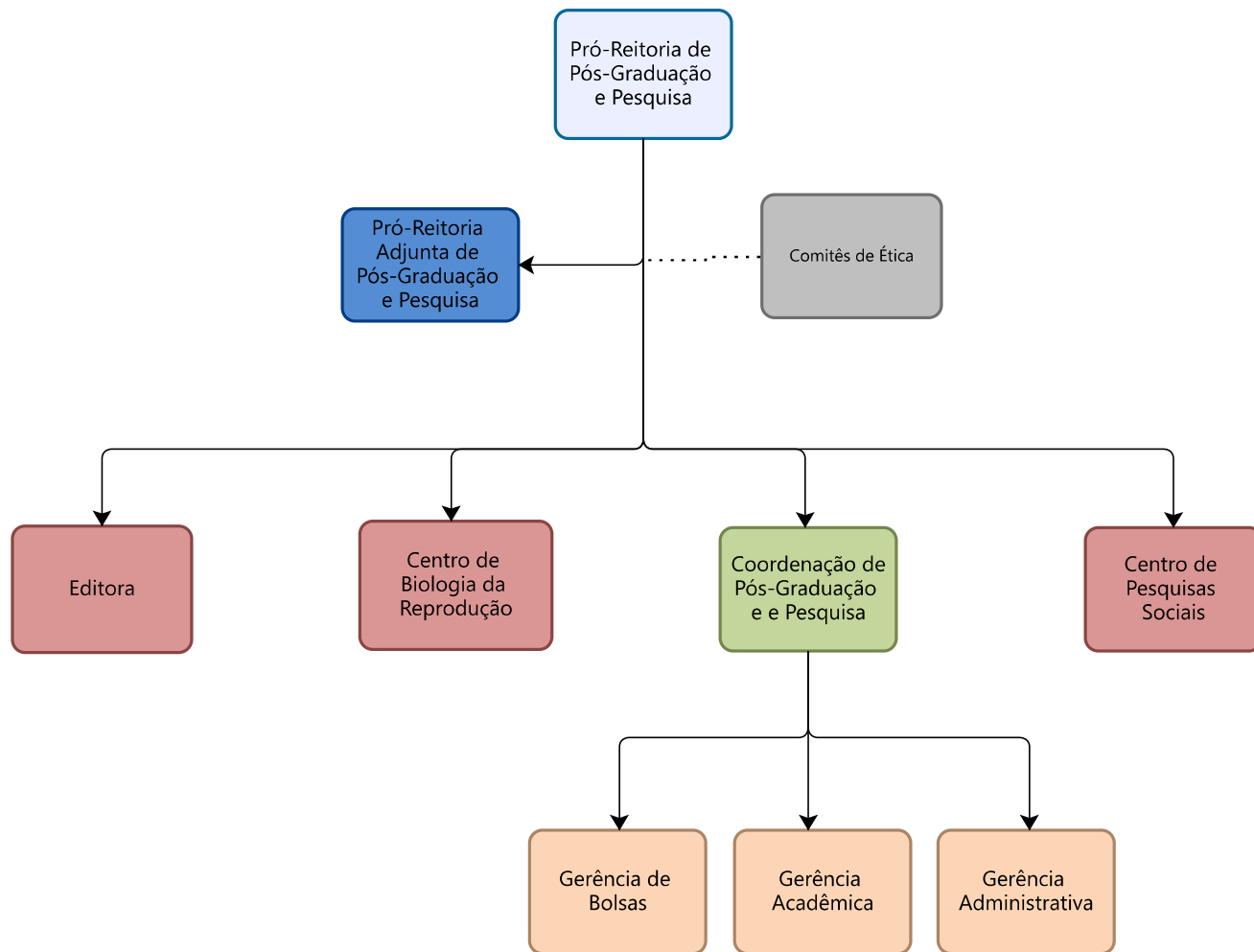


CAMPUS AVANÇADO DE GOVERNADOR VALADARES

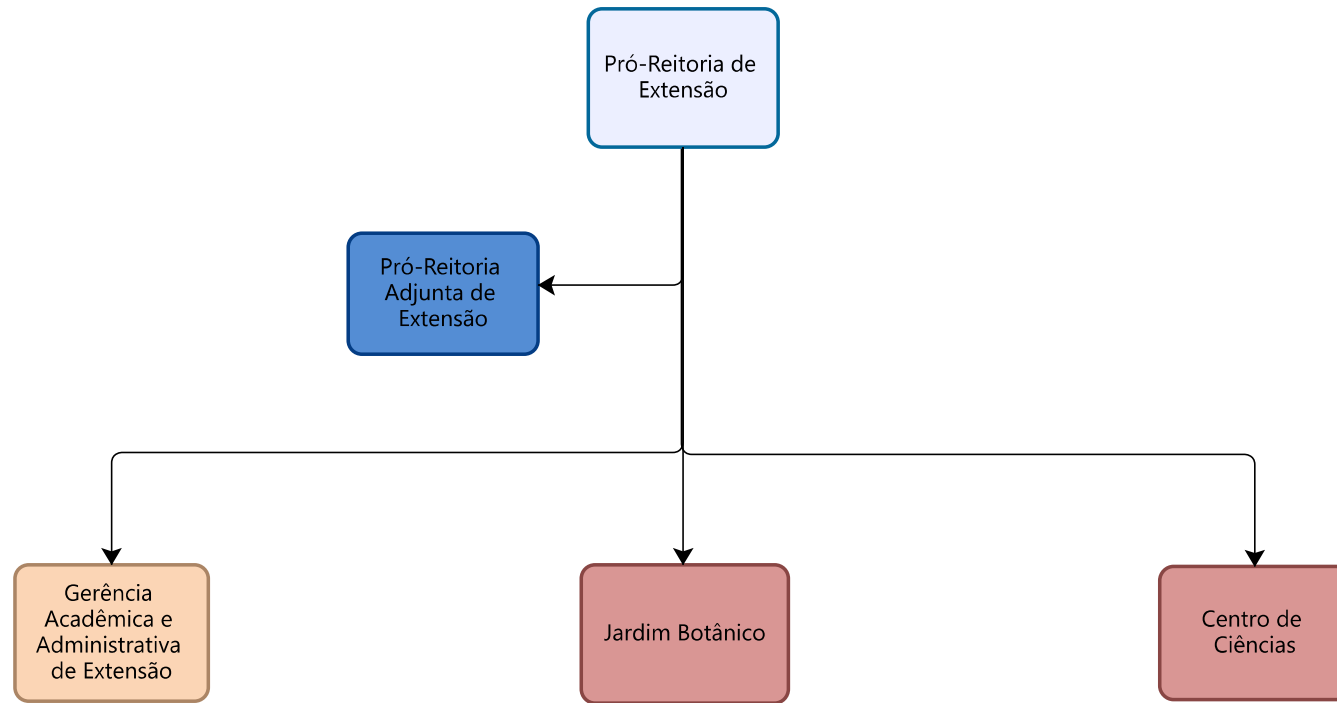


**PRÓ-REITORIA DE GRADUAÇÃO**

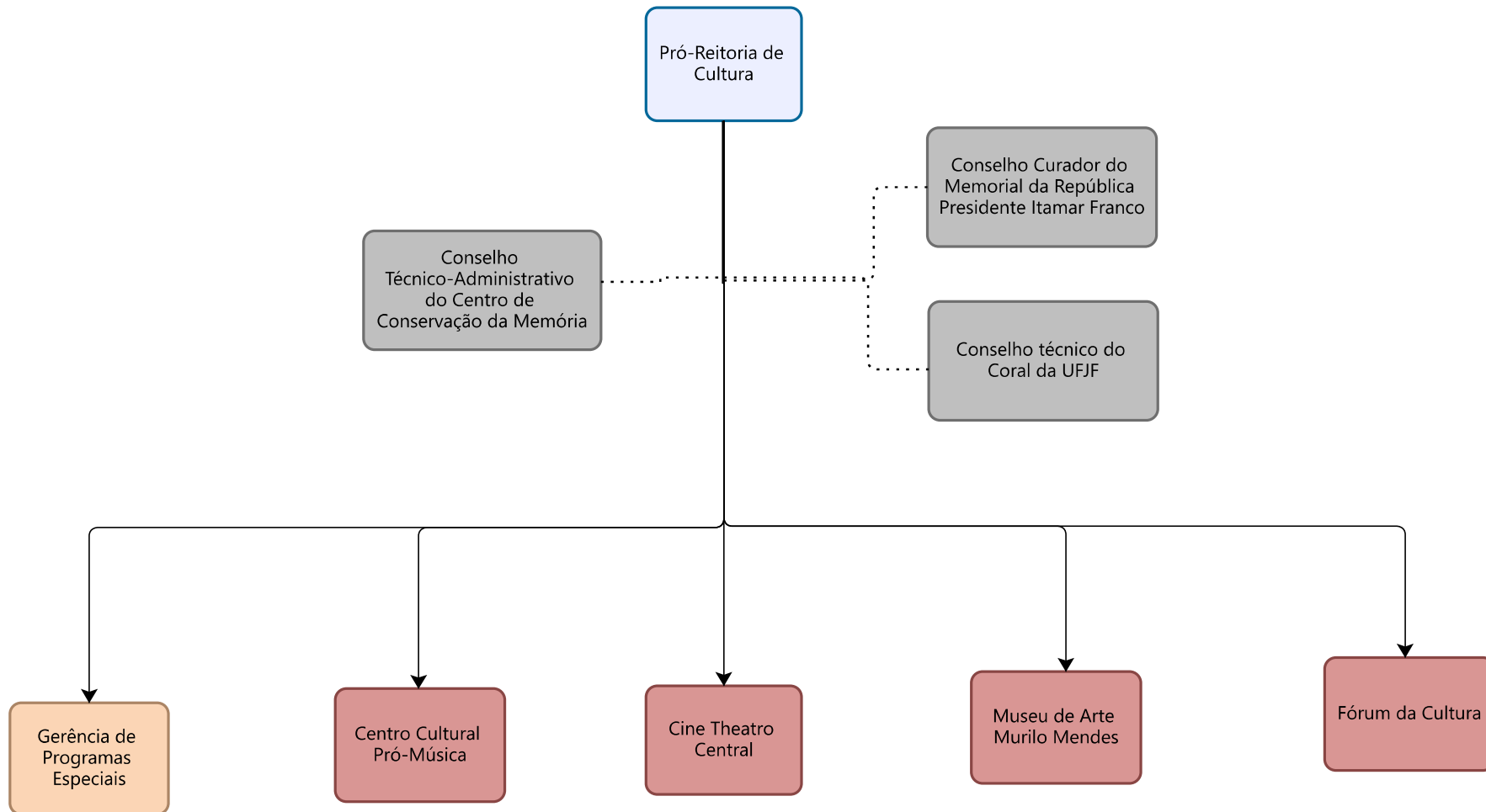




PRÓ-REITORIA DE EXTENSÃO

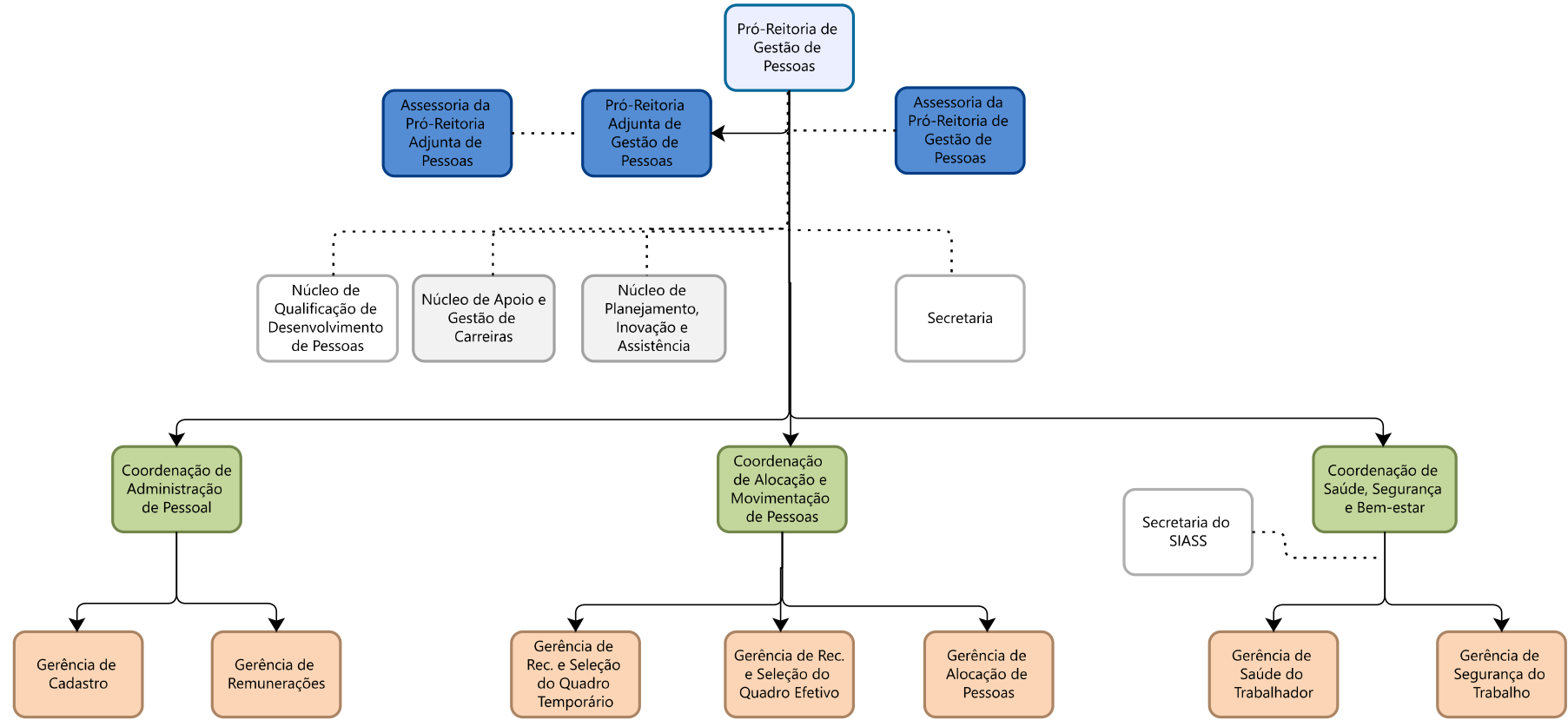


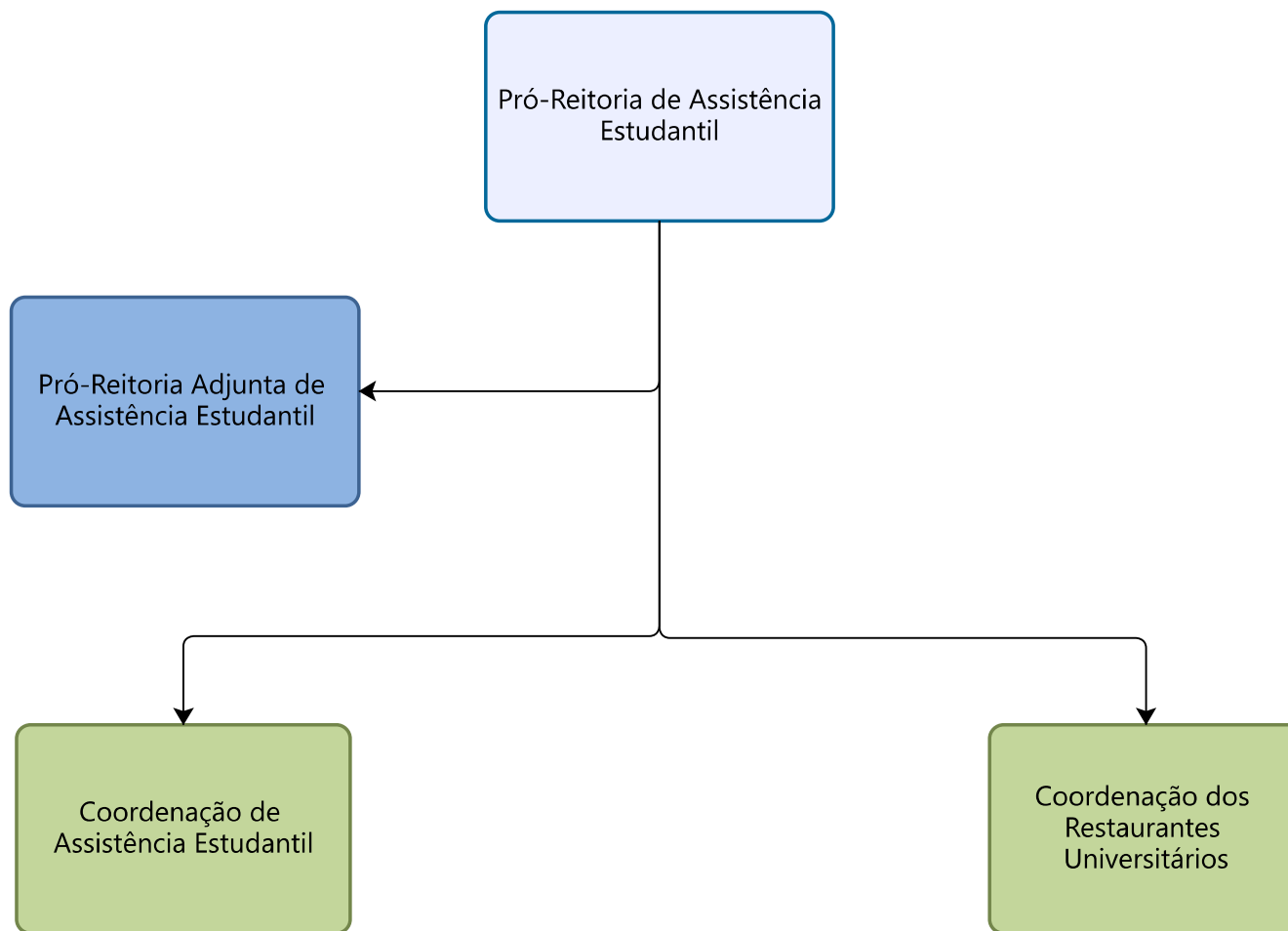
PRÓ-REITORIA DE CULTURA



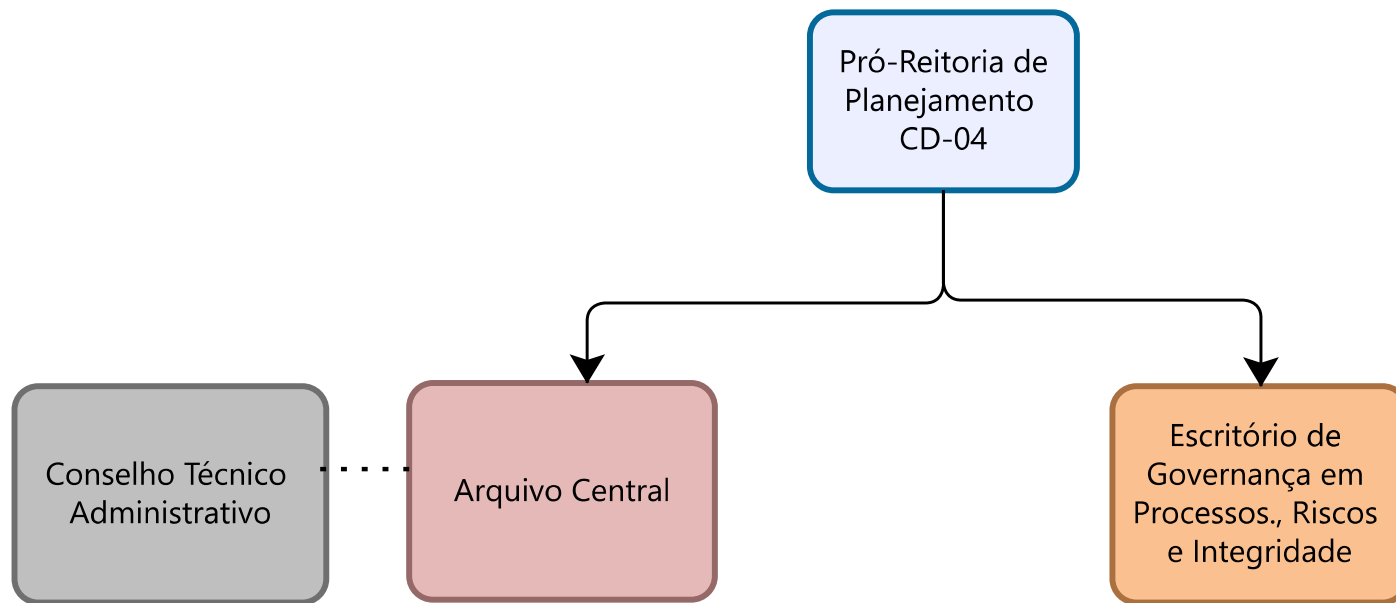


PRÓ-REITORIA DE GESTÃO DE PESSOAS

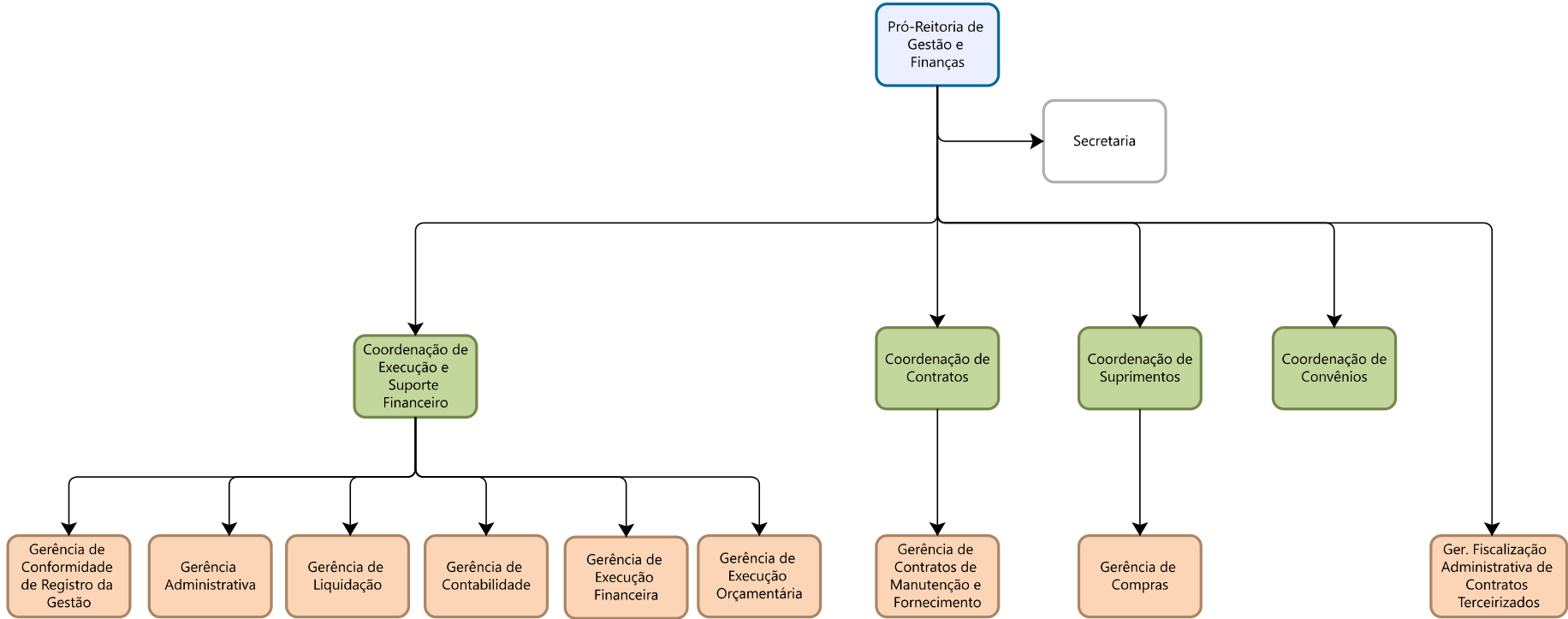




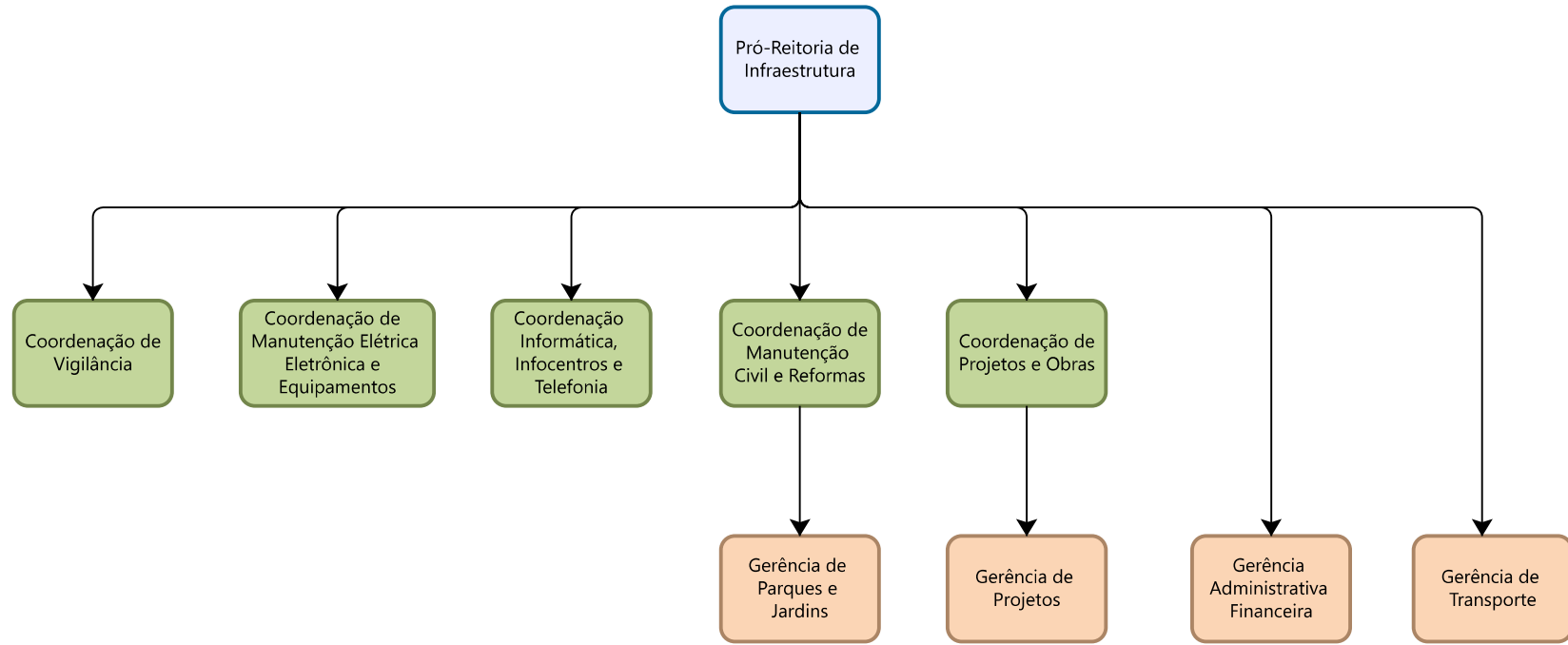
**PRÓ-REITORIA DE PLANEJAMENTO**



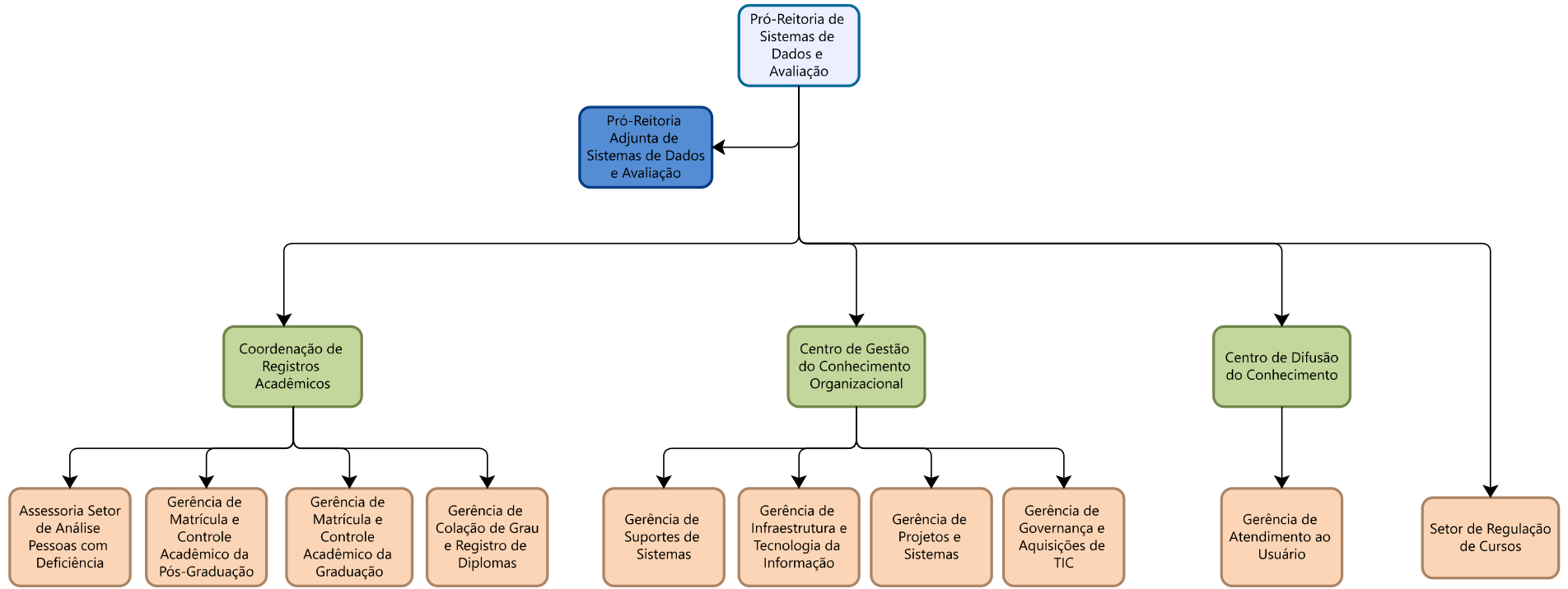
PRÓ-REITORIA DE GESTÃO E FINANÇAS



PRÓ-REITORIA DE INFRAESTRUTURA



PRÓ-REITORIA DE SISTEMAS DE DADOS E AVALIAÇÃO



PRÓ-REITORIA DE INOVAÇÃO

