

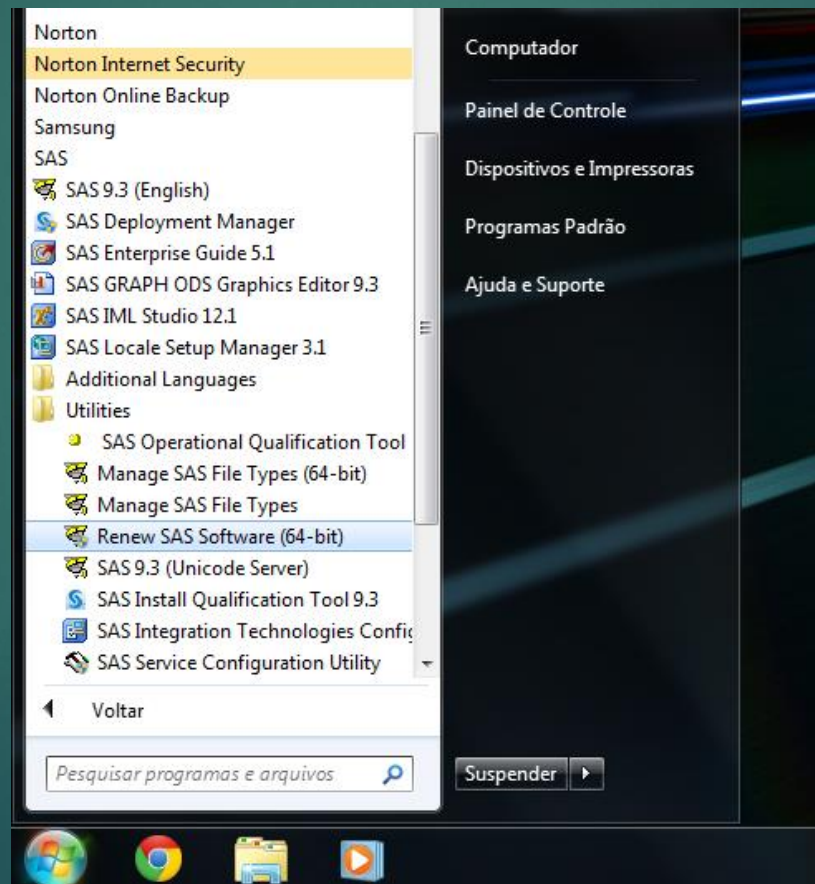


# Tutorial para inserir a nova licença do SAS

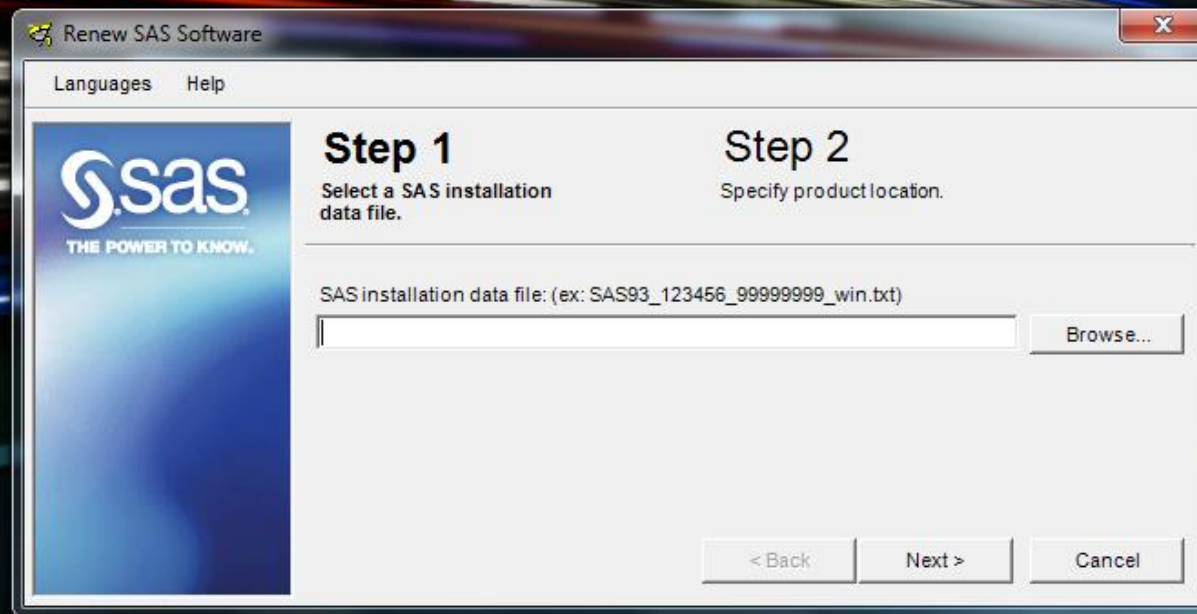


Baixe a licença enviada por e-mail  
no desktop (área de trabalho)

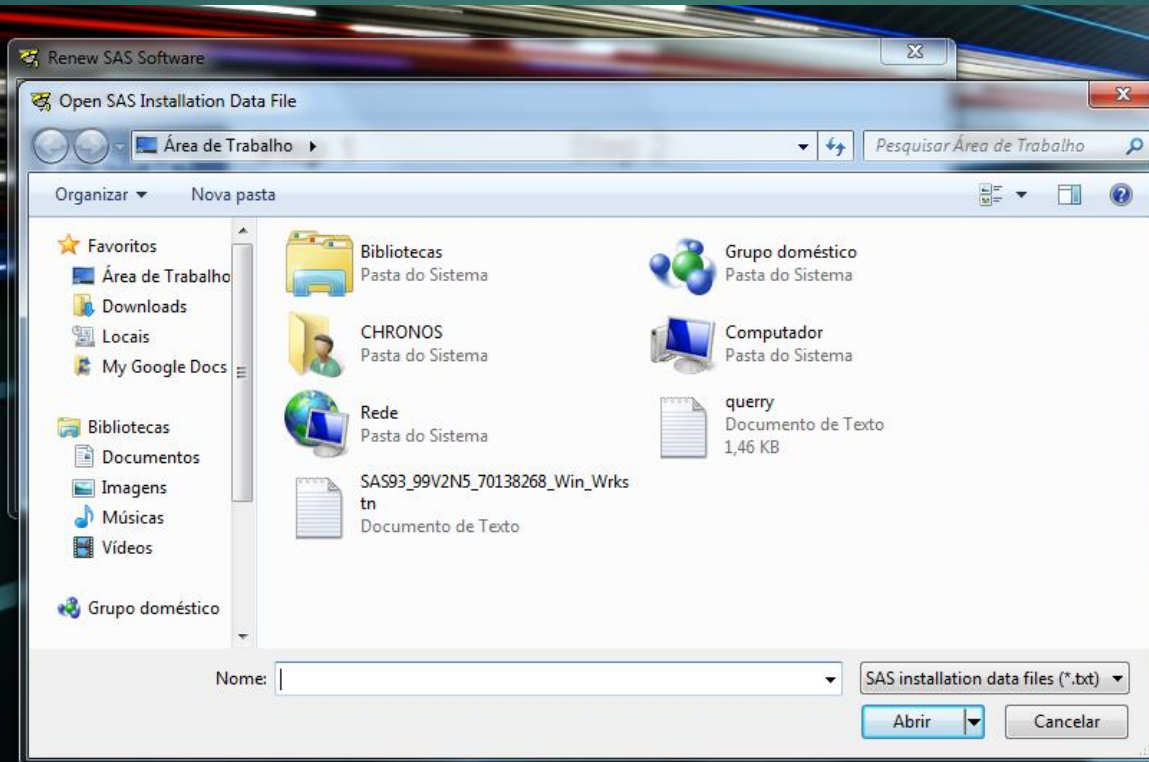
Clique no Menu Iniciar -> Todos os Programas -> SAS -> Utilities -> Renew SAS Software



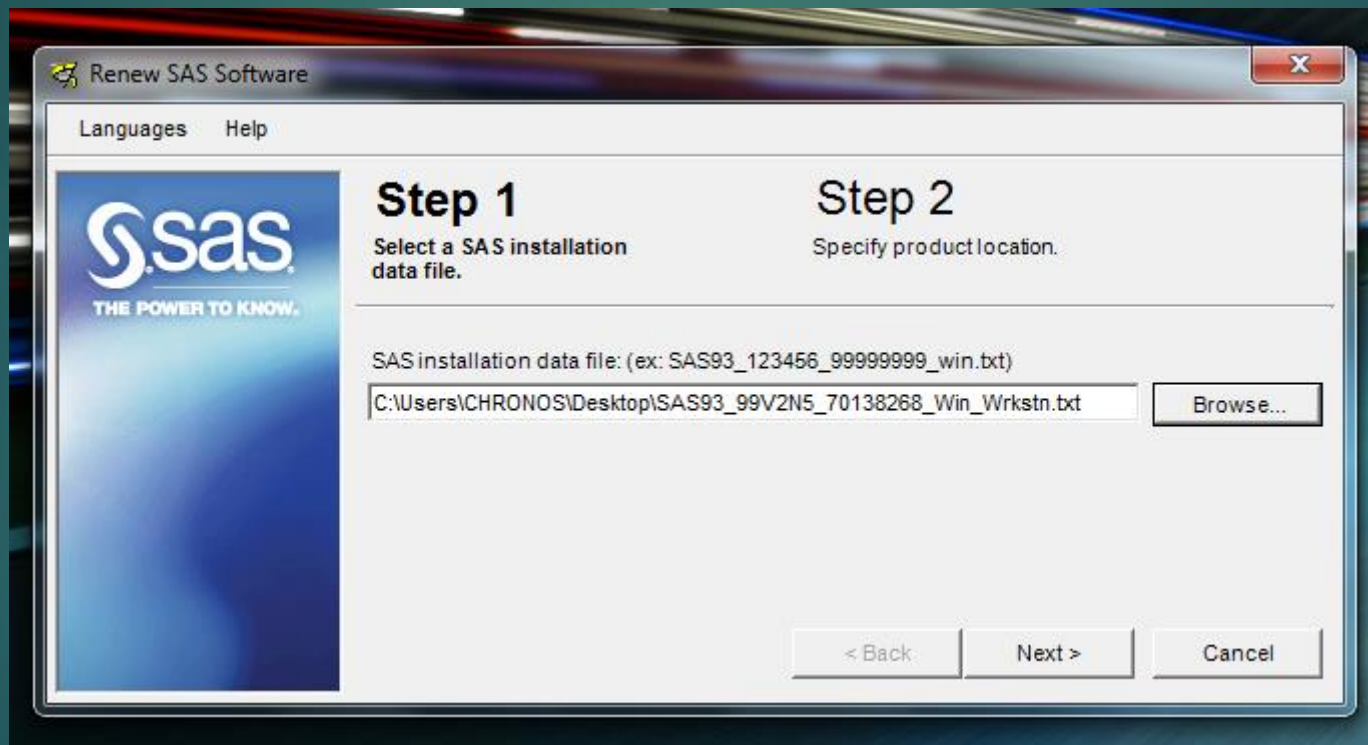
# Clique no botão “Browse” ...



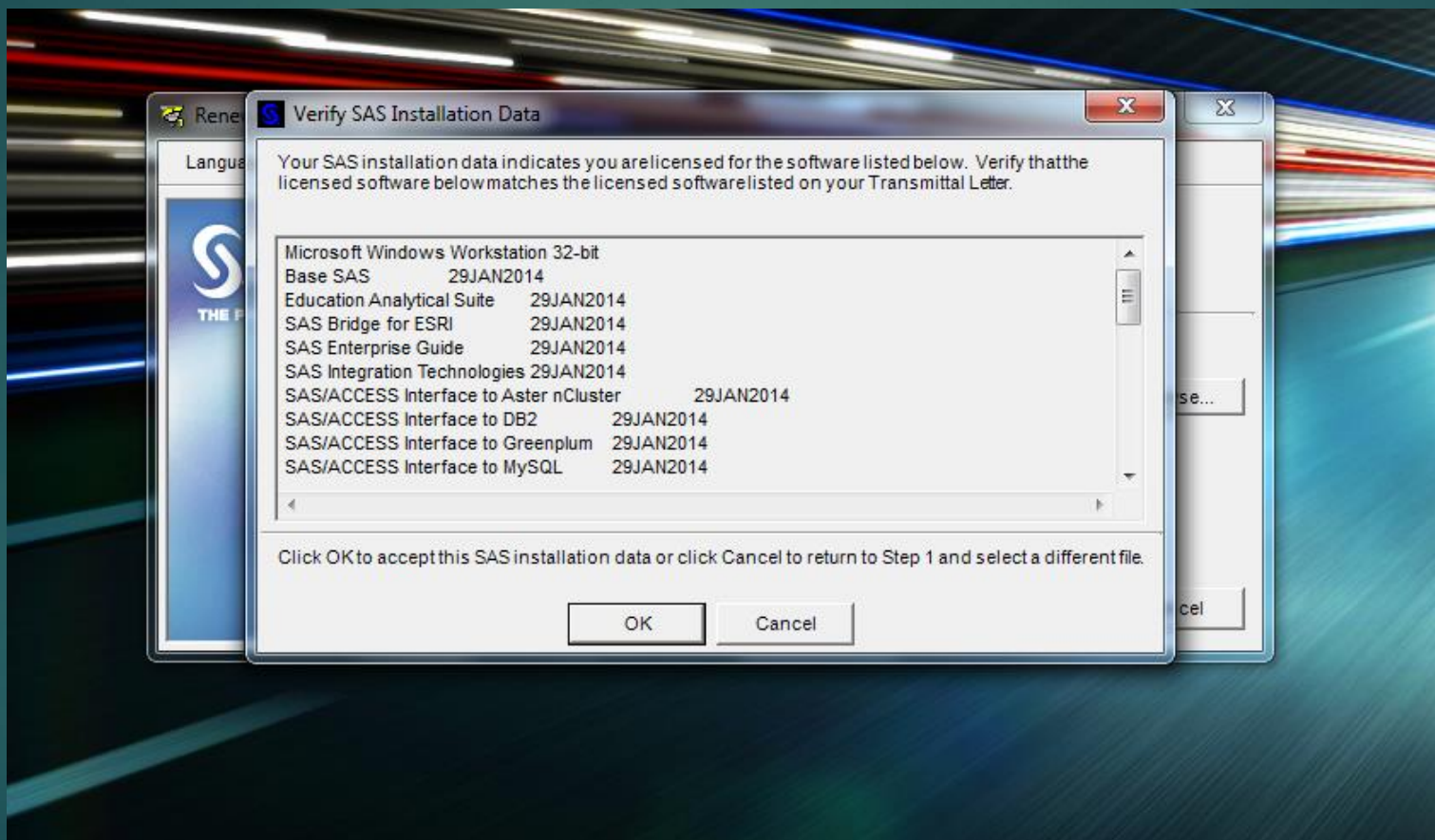
... abra o local onde você baixou a licença e dê duplo clique em cima dela



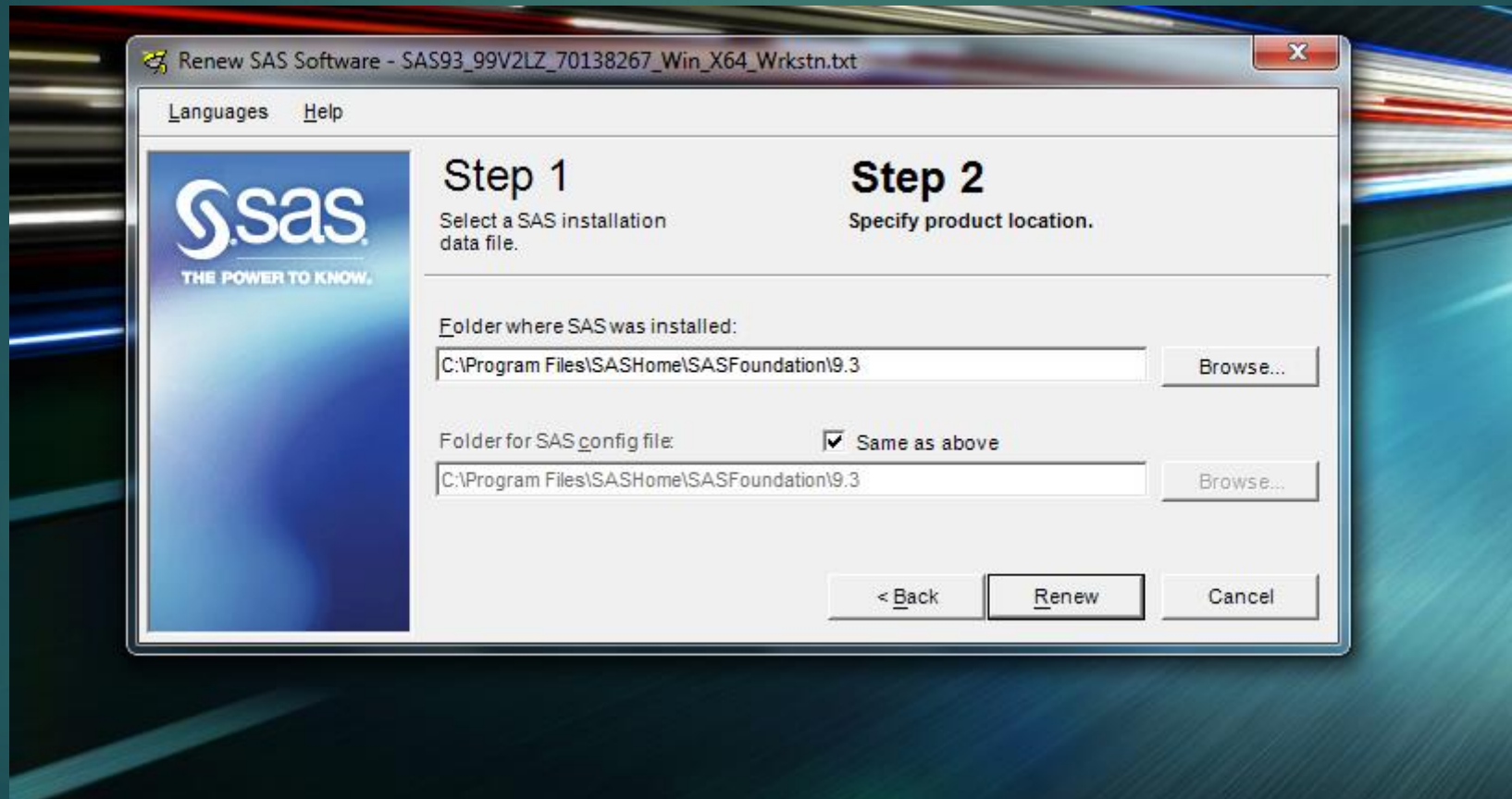
# Clique em “Next”




# Clique em “OK”



Clique em “Renew” e depois clique em “OK”







Ir  aparecer uma mensagem  
confirmando que voc  conseguiu  
ativar o SAS com a nova licena