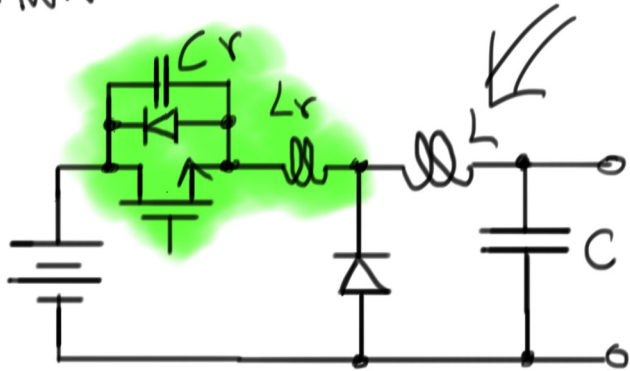
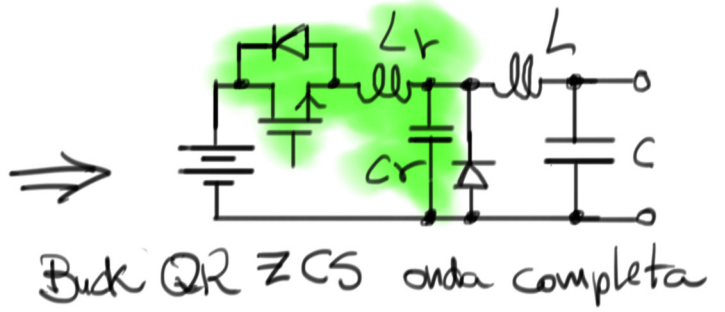
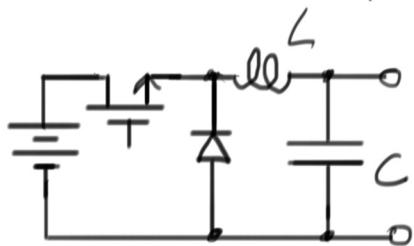


Conversores QR c/ Frequência Fixa

→ Uso de interruptores auxiliares

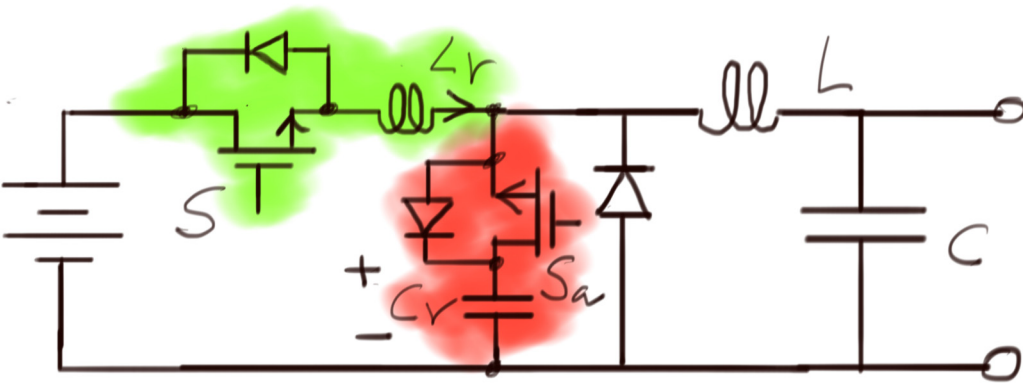
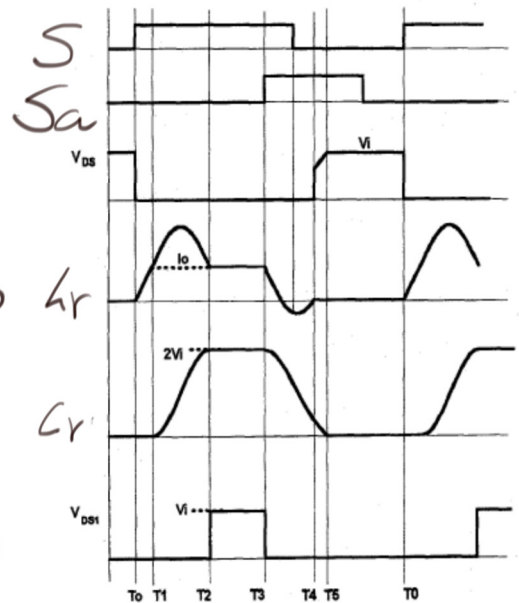
Buck:
 $f \rightarrow$ fixo
 $D \rightarrow$ PWM



Buck QR ZVS meia-onda

Ambos → f variável!

Buck QR ZCS PWM:



Boost ZCT PWM (c/ IGBT)

